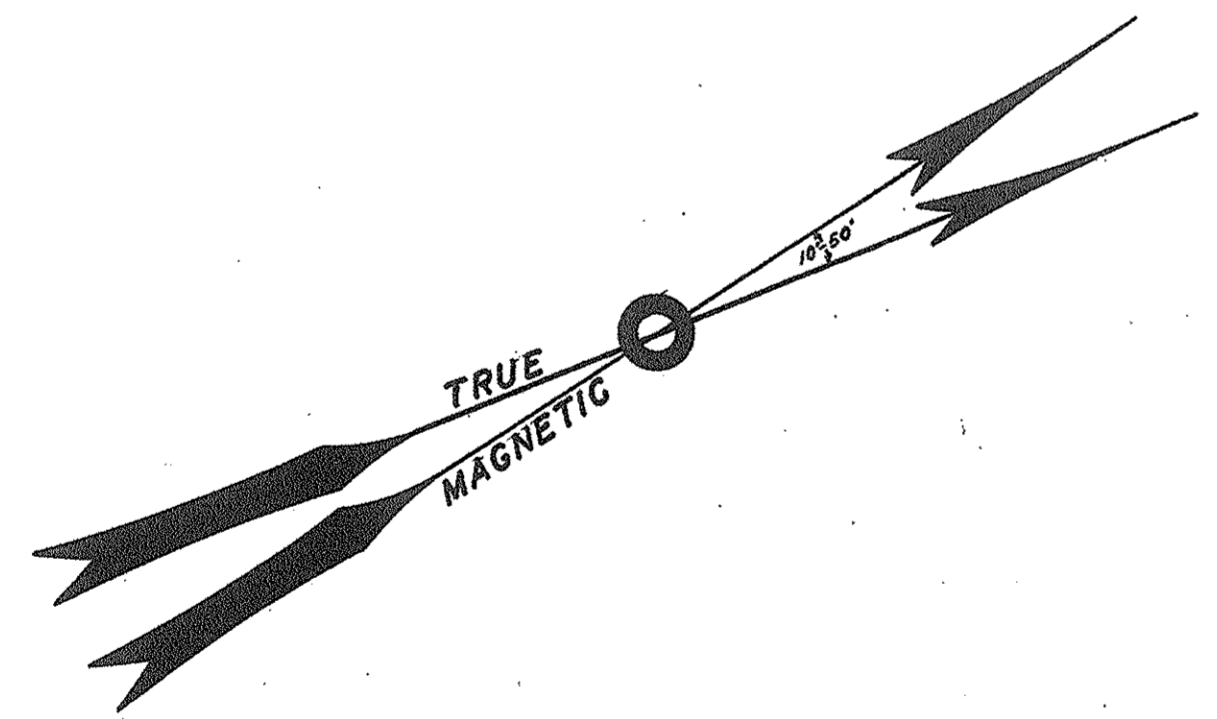
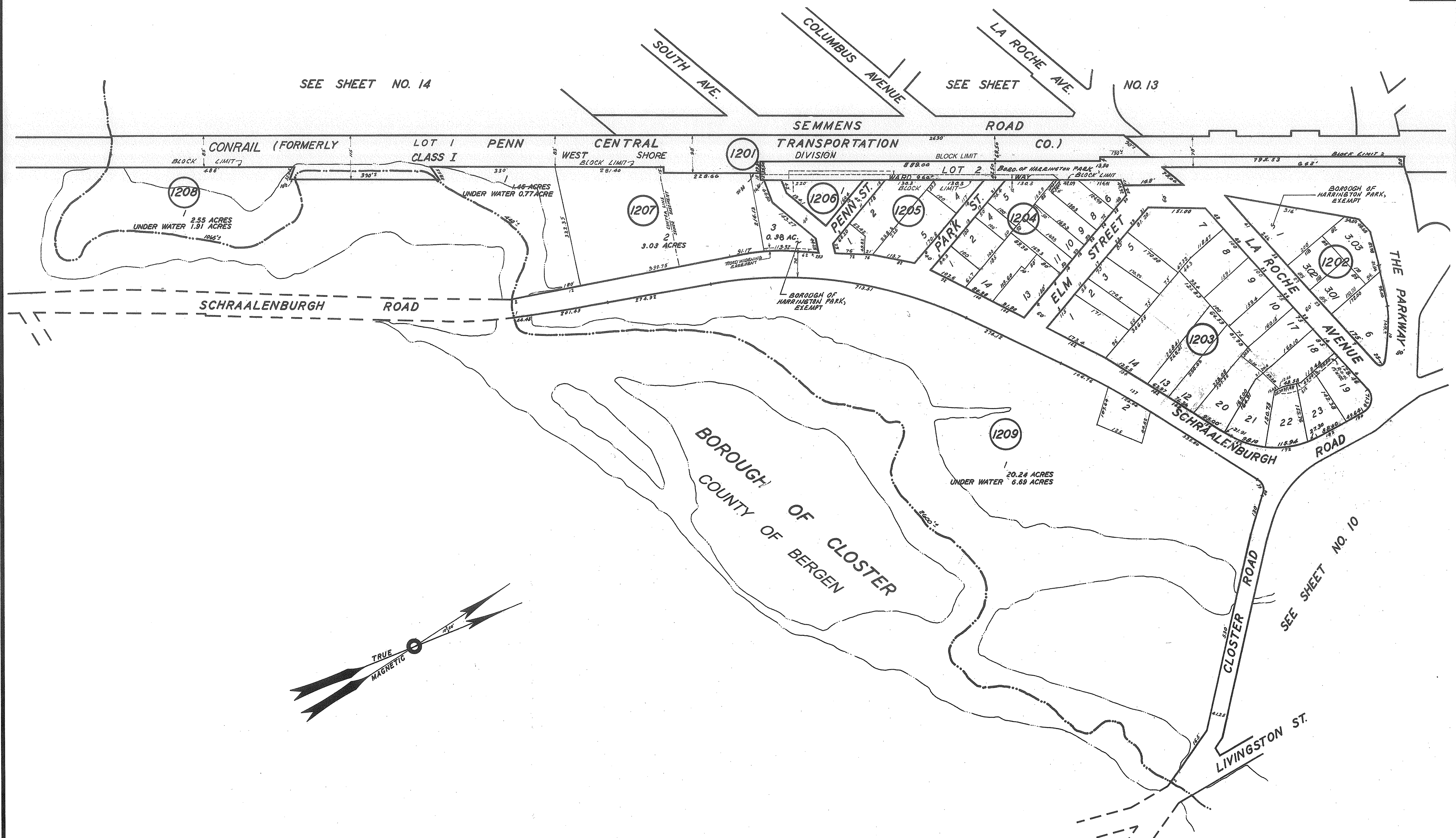


SEE SHEET NO. 14

SEE SHEET NO. 13



THIS MAP IS A SCANNED COPY OF THE TAX MAP
 PREPARED BY A.C. HOBELMAN, REVISED BY
 LOUIS A. RAIMONDI, P.L.S. LICENSE NO. 10622,
 DATED FEBRUARY 2005.

APPROVED BY NEW JERSEY DIVISION OF TAXATION
 SIGNED BY:
 JAMES J. COLL, CHIEF LOCAL ASSESSMENT COMPLIANCE
 SANTO C. DIDONATO, SUPERVISOR
 DATED: JUNE 7, 2005 SERIAL NO. 859

STATE TAX DEPARTMENT
 Approved as a Tax Map According to the
 Provisions of Chapter 175, Laws of 1913.
 J. H. MAVER MARTIN
 Chief of Assessor
 Date: Aug. 9, 1938, Serial No. 71.
 REVISED MARCH 2012
 REVISED APRIL 2012

ASSESSMENT MAP
 HARRINGTON PARK
 BERGEN COUNTY N.J.
 SCALE 1"=100 FT. JUNE-1938
 A.C. HOBELMAN C.E.
 HARRINGTON PARK N.J.
 REVISED JAN. 1970
 REVISED JAN 1986
 REVISED MAR 1991
 REVISED FEB 2005