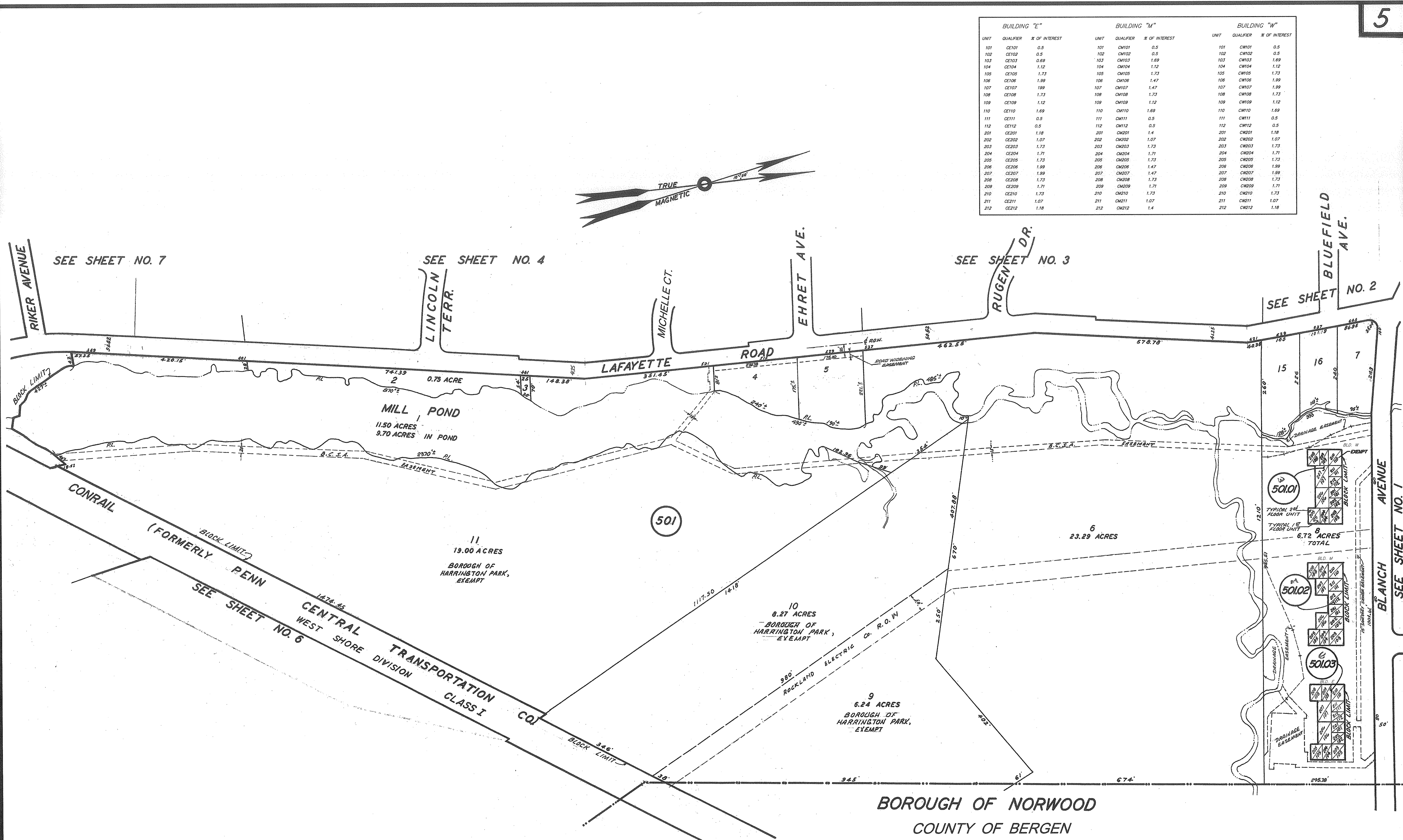
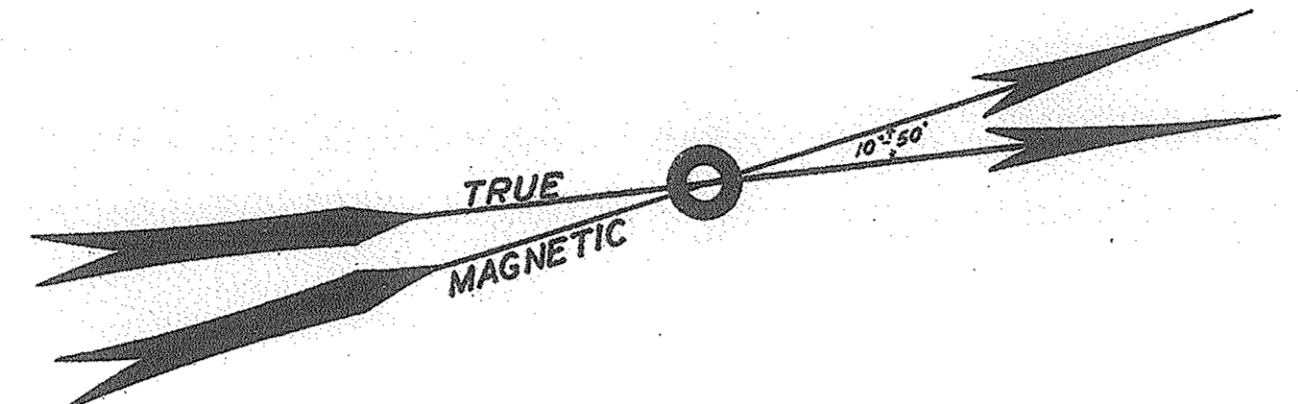


| BUILDING "E" |           |               | BUILDING "M" |           |               | BUILDING "W" |           |               |
|--------------|-----------|---------------|--------------|-----------|---------------|--------------|-----------|---------------|
| UNIT         | QUALIFIER | % OF INTEREST | UNIT         | QUALIFIER | % OF INTEREST | UNIT         | QUALIFIER | % OF INTEREST |
| 101          | CE101     | 0.5           | 101          | CM101     | 0.5           | 101          | CW101     | 0.5           |
| 102          | CE102     | 0.5           | 102          | CM102     | 0.5           | 102          | CW102     | 0.5           |
| 103          | CE103     | 0.69          | 103          | CM103     | 1.69          | 103          | CW103     | 1.69          |
| 104          | CE104     | 1.12          | 104          | CM104     | 1.12          | 104          | CW104     | 1.12          |
| 105          | CE105     | 1.73          | 105          | CM105     | 1.73          | 105          | CW105     | 1.73          |
| 106          | CE106     | 1.99          | 106          | CM106     | 1.47          | 106          | CW106     | 1.99          |
| 107          | CE107     | 1.99          | 107          | CM107     | 1.47          | 107          | CW107     | 1.99          |
| 108          | CE108     | 1.73          | 108          | CM108     | 1.73          | 108          | CW108     | 1.73          |
| 109          | CE109     | 1.12          | 109          | CM109     | 1.12          | 109          | CW109     | 1.12          |
| 110          | CE110     | 1.69          | 110          | CM110     | 1.69          | 110          | CW110     | 1.69          |
| 111          | CE111     | 0.5           | 111          | CM111     | 0.5           | 111          | CW111     | 0.5           |
| 112          | CE112     | 0.5           | 112          | CM112     | 0.5           | 112          | CW112     | 0.5           |
| 201          | CE201     | 1.18          | 201          | CM201     | 1.4           | 201          | CW201     | 1.18          |
| 202          | CE202     | 1.07          | 202          | CM202     | 1.07          | 202          | CW202     | 1.07          |
| 203          | CE203     | 1.73          | 203          | CM203     | 1.73          | 203          | CW203     | 1.73          |
| 204          | CE204     | 1.71          | 204          | CM204     | 1.71          | 204          | CW204     | 1.71          |
| 205          | CE205     | 1.73          | 205          | CM205     | 1.73          | 205          | CW205     | 1.73          |
| 206          | CE206     | 1.99          | 206          | CM206     | 1.47          | 206          | CW206     | 1.99          |
| 207          | CE207     | 1.99          | 207          | CM207     | 1.47          | 207          | CW207     | 1.99          |
| 208          | CE208     | 1.73          | 208          | CM208     | 1.73          | 208          | CW208     | 1.73          |
| 209          | CE209     | 1.71          | 209          | CM209     | 1.71          | 209          | CW209     | 1.71          |
| 210          | CE210     | 1.73          | 210          | CM210     | 1.73          | 210          | CW210     | 1.73          |
| 211          | CE211     | 1.07          | 211          | CM211     | 1.07          | 211          | CW211     | 1.07          |
| 212          | CE212     | 1.18          | 212          | CM212     | 1.4           | 212          | CW212     | 1.18          |



THIS MAP IS A SCANNED COPY OF THE TAX MAP PREPARED BY A.C. HOBELMAN, REVISED BY LOUIS A. RAMONDI, P.L.S. LICENSE NO. 10622, DATED FEBRUARY 2005.

APPROVED BY NEW JERSEY DIVISION OF TAXATION  
SIGNED BY:  
JAMES J. COLL, CHIEF LOCAL ASSESSMENT COMPLIANCE  
SANTO C. DIDONATO, SUPERVISOR  
DATED: JUNE 7, 2005 SERIAL NO. 859

STATE TAX DEPARTMENT  
Approved as a Tax Map According to the Provisions of Chapter 175, Laws of 1913.  
J. H. PRAYER MARTIN  
State Tax Commissioner  
AUG 9 1988 Serial No. 71

ASSESSMENT MAP  
HARRINGTON PARK  
BERGEN COUNTY N.J.  
SCALE 1"=100 FT. JUNE-1938  
A.C. HOBELMAN C.E.  
HARRINGTON PARK N.J.

REVISED JAN 1970  
REVISED JAN 1986  
REVISED MAR 1991

REVISED FEB. 2005